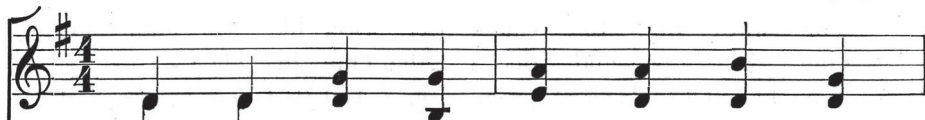


## STUTTGART 8.7.8.7.

Arranged from a melody in  
Psalmodia Sacra, Gotha, 1715

SAMUEL JOHNSON  
Adapted



1. On - ward, Chris - tian, though the re - gion
2. By the Christ road, and none oth - er,
3. By thy trust - ful, calm en - deav - or,



Where thou art seem drear and lone; God hath set a  
Is the mount of vi - sion won; Tread it with re -  
Guid - ing, cheer - ing, like the sun, Earth-bound hearts thou



guar - dian le - gion Ver - y near thee, press thou on.  
joic - ing, broth - er: Je - sus trod it, press thou on.  
shalt de - liv - er; O, for their sake, press thou on.

