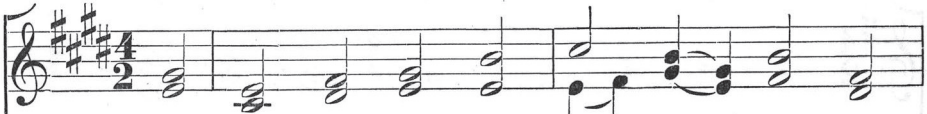
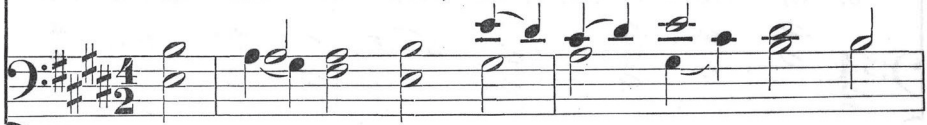


KINGTON 8. 4. 8. 4.  
F. LLEWELLYN EDWARDS

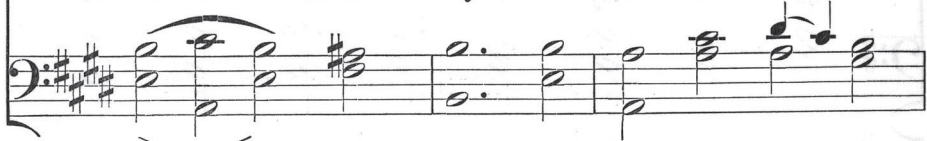
CHRISTMAS MORN  
MARY BAKER EDDY



1. Blest Christ - mas morn, though murk - y clouds Pur -  
 2. Dear Christ, for - ev - er here and near, No  
 3. Thou God - i - de - a, Life - en - crowned, The  
 4. Thou gen - tle beam of liv - ing Love, And  
 5. Or cru - el creed, or earth - born taint: Fill



sue . . . thy way, Thy light was born where  
 cra . . . dle song, No na - tal hour and  
 Beth . . . lehem babe— Be - loved, re - plete, by  
 death . . . less Life! Truth in - fi - nite, — so  
 us . . . to - day With all thou art— be



storm en - shrouds Nor dawn . . . nor day!  
 moth - er's tear, To thee . . . be - long.  
 flesh em - bound— Was but . . . thy shade!  
 far a - bove All mor - tal strife,  
 thou our saint, Our stay, . . . al - way.

