

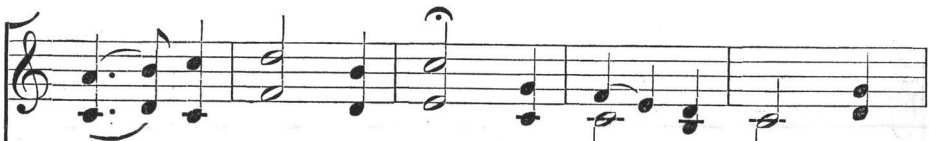
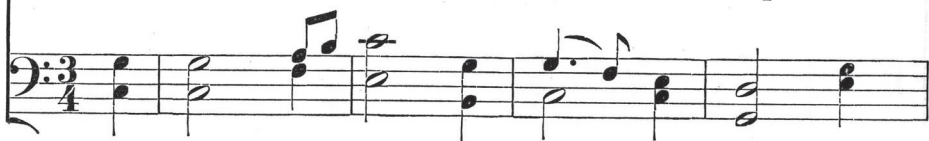
COLCHESTER C.M.

HENRY PURCELL

RICHARD C. TRENCH*



1. Make chan - nels for.. the streams of Love, Where
 2. But if .. at an - y time.. we cease Such
 3. For we.. must share, if we ... would keep That



they may broad - ly run; And Love has o - ver -
 chan - nels to pro - vide, The ver - y founts of
 bless - ing from a - bove; They cease to have who



flow - ing streams, To fill.. them ev - ery one.
 love for us Will then seem parched and dried.
 cease to give: Such is .. the law of Love.

